

DELGADO DE LEON, M ARCH-3801-001-1 ARCH. DIGITAL MEDIA I Online Administration
 Dept: ARCHITECTURE Forms requested: 17 Returned: 15 : ----

Comparison info for dept and campus is for your instructor group and the course level ONLY, using Sumr 15 & Sumr 16 data.

Group: OTH (Primary instructors not tenured/tenure-track) Level: Upper division

Sections in comparisons: Dept: 6 : (no comparisons, see footnote) Campus: 261

Item number and description	Your rating		Diff from		Percentile in		Number of responses										Profile of your average ratings (with 95% confidence bands)						Averages in				
	Avg	Median	Dept	Campus	Dept	Campus	Lowest					Highest					Lowest			Highest			Dept	Campus			
							1	2	3	4	5	6	BL	SD	1	2	3	4	5	6	1	2	3	4	5	6	
2 Personal interest before enrolled	5.0	5.0	**	+	**	81	0	1	0	2	6	5	1	1.1												4.8	4.4
3 Instr effectiveness encouraging interest	5.4	6.0	**	0	**	64	0	0	1	1	4	8	1	0.9												5.4	5.0
4 Instr availability for assistance	5.6	6.0	**	+	**	69	0	0	0	1	4	9	1	0.6												5.4	5.1
5 Intellectual challenge of course	4.6	5.0	**	-	**	26	0	1	0	4	7	2	1	1.0												4.9	4.9
6 How much you learned in course	5.5	6.0	**	+	**	77	0	0	0	1	5	8	1	0.7												5.2	5.0
7 Course overall	5.2	6.0	**	0	**	50	0	1	0	2	3	8	1	1.2												5.4	5.0
8 Instructor overall	5.4	6.0	**	0	**	52	0	0	1	1	3	9	1	0.9												5.5	5.2
9 Instr respect/professional treatment	5.8	6.0	**	0	**	43	0	0	0	0	3	11	1	0.4												5.7	5.7
1 Hours/week spent on course (incl class)	7-9	7-9	**	0	**	36	1	4	4	2	3	0	1	1.3												10-12	10-12

Hours/week scale: 0-3=1, 4-6=2, 7-9=3, 10-12=4, 13-15=5, 16+=6

Optional questions

	Avg			Lowest					Highest				
	rating	Median	SD	1	2	3	4	5	6	BL	NA		
646 Clarity of course objectives was	5.2	5.0	0.7	0	0	0	2	7	5	1	0		
647 Quality of textbooks and supporting materials was	5.1	5.0	1.2	0	1	0	1	5	5	1	2		
648 This course built on other courses I have taken: little=1 2 3 4 5	4.4	4.5	1.5	0	2	2	3	2	5	1	0		
649 The quality of individual assistance provided by the instructor w	5.4	6.0	0.8	0	0	0	3	3	8	1	0		
650 The quality of individual assistance provided by the teaching ass	5.0	6.0	2.0	1	0	0	0	1	4	1	8		
651 Instructor encouraged independent thought: little=1 2 3 4 5 6=ver	5.6	6.0	0.5	0	0	0	0	5	9	1	0		
652 Would you choose another course with this instructor? never=1 2 3	4.8	6.0	1.8	1	2	0	1	2	8	1	0		
653 Instructor's sensitivity to the background and preparation of stu	4.9	5.0	1.5	1	0	1	2	4	6	1	0		
642 Course challenged me to think critically	5.0	5.5	1.4	1	0	0	3	3	7	1	0		
643 Course challenged me to write effectively	3.6	4.0	2.2	2	1	0	1	1	2	1	7		
644 Course challenged my quantitative skills	4.1	4.0	1.7	1	1	1	3	1	3	1	4		
645 Course challenged my verbal communication skills	3.8	4.0	1.7	1	2	1	3	2	2	1	3		

For more info, see below and www.colorado.edu/fcq/stats

Standard item correlations

	2	3	4	5	6	7	8	9
1	.4	.5	.5	.3	.5	.4	.5	.2
2		.8	.5	.6	.5	.9	.8	.3
3			.8	.6	.6	.8	.9	.6
4				.2	.7	.6	.7	.5
5					.3	.7	.7	.3
6						.7	.8	.1
7							.9	.4
8								.4

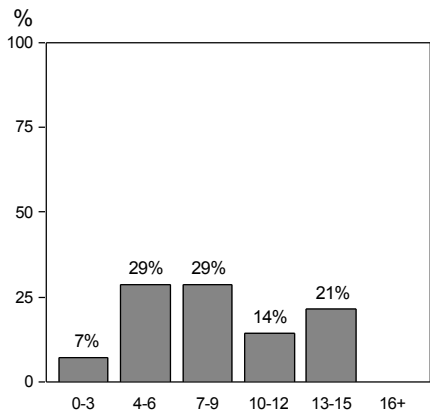
Correlation coefficients range from -1.0 to 1.0, and indicate the direction and strength of the relationship between two items.

Occasionally some (but not all) correlations will be missing. This can happen if all students give the same rating on a particular item.

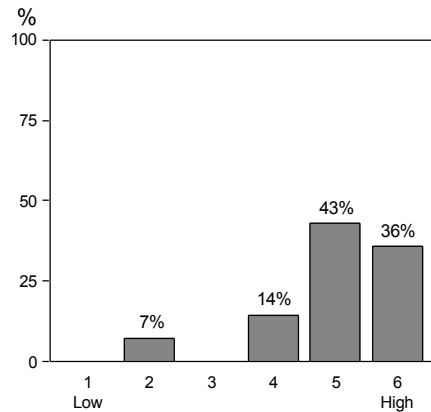
statistics NOT DISPLAYED in report because department and data are the same.
 Median is the middle score when all ratings are rank-ordered. SD (standard deviation) is the DISagreement among raters.
 Difference of your average from the group average for Dept and Campus ranges from --- to +++. 0 = negligible difference.
 Percentile = percentile of your average rating within a particular group: Dept and Campus.
 ** 'Diff from' and 'Percentile in' statistics not displayed if comparison group has fewer than 10 sections.
 A confidence band indicates an interval within which we are 95% confident that the 'true' value of the average lies.
 See www.colorado.edu/fcq for details on all statistics in report, and for FCQ results from the last 8 years.
 Blank (BL) and non-applicable (NA) responses are tallied but excluded from averages.
 Questions? See www.colorado.edu/fcq, e-mail fcq@Colorado.EDU, or call the FCQ office at 303-492-7069.

SEE GRAPHS ON REVERSE SIDE

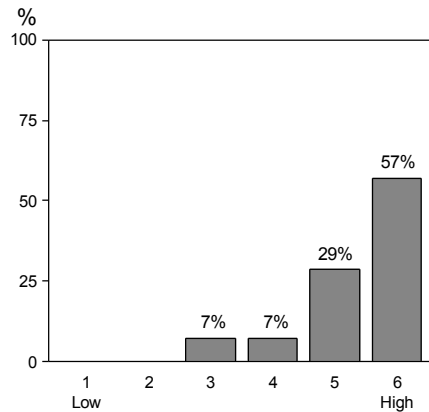
FCQ Results, Summer 2017, ARCH-3801-001 -- DELGADO DE LEON, M



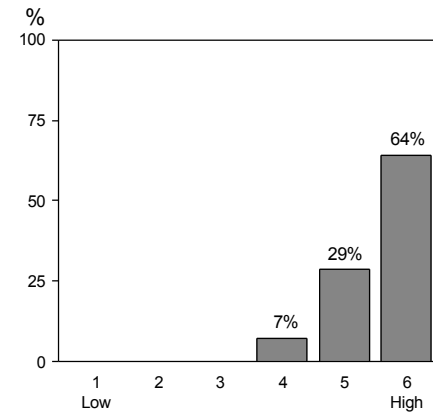
1: Hours/week spent on course (incl class)



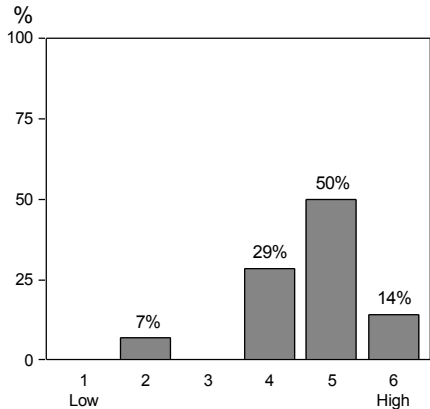
2: Personal interest before enrolled



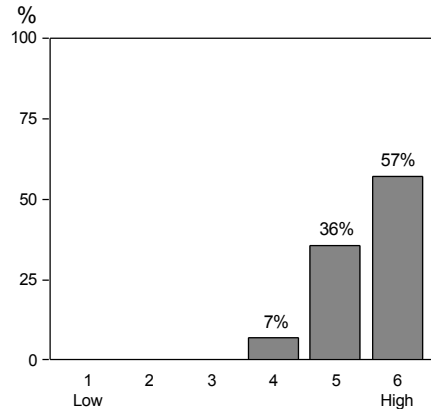
3: Instructor encourages interest



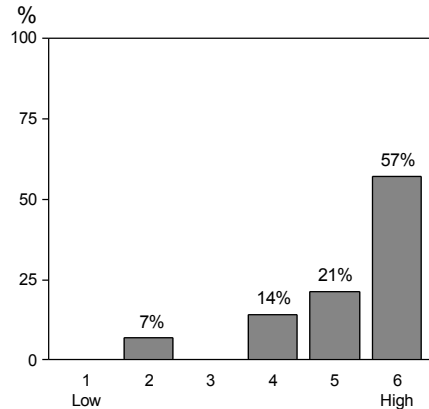
4: Instructor availability for assistance



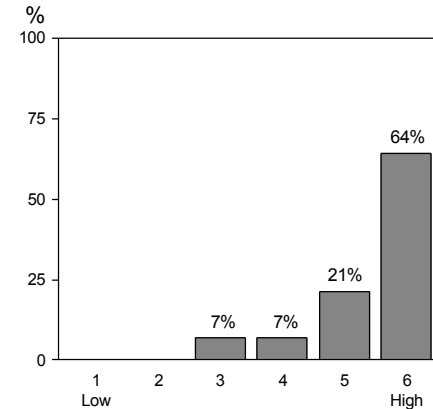
5: Intellectual challenge of course



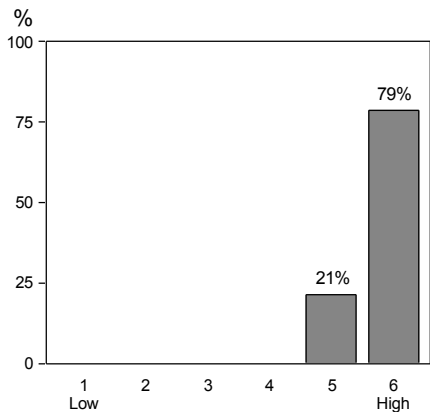
6: How much learned in course



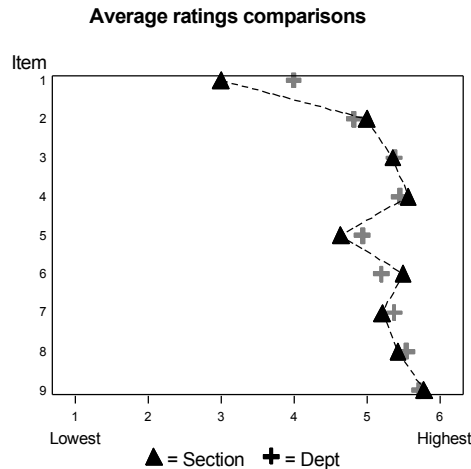
7: Course overall



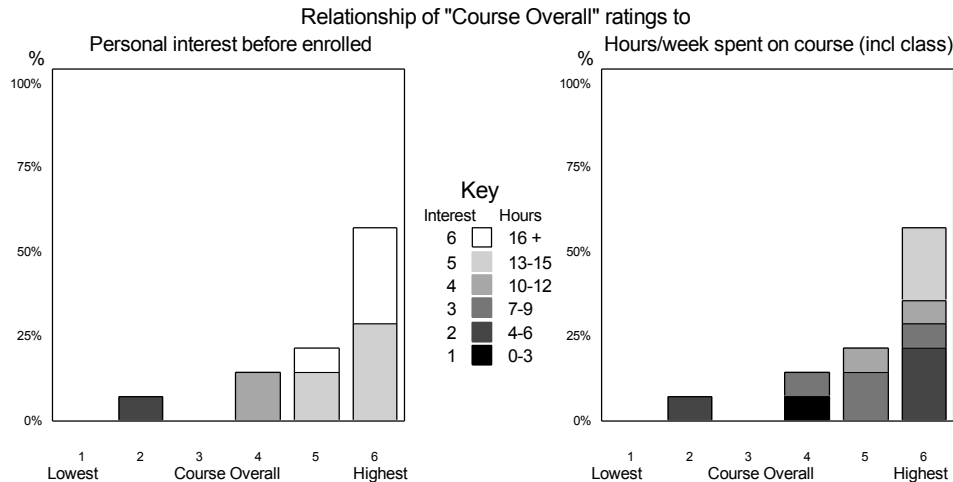
8: Instructor overall



9: Instructor respect for students



Average ratings comparisons



Relationship of "Course Overall" ratings to Personal interest before enrolled and Hours/week spent on course (incl class)

Key

- Interest
 - 6 (White)
 - 5 (Light Gray)
 - 4 (Medium Gray)
 - 3 (Dark Gray)
 - 2 (Black)
 - 1 (Black)
- Hours
 - 16+ (White)
 - 13-15 (Light Gray)
 - 10-12 (Medium Gray)
 - 7-9 (Dark Gray)
 - 4-6 (Black)
 - 0-3 (Black)